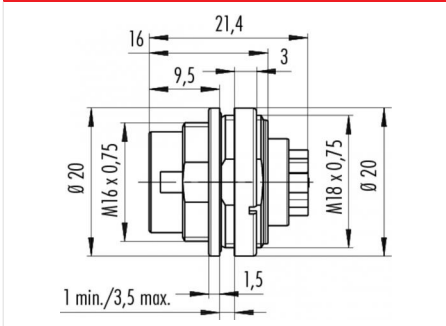


Product	M16 IP67 male panel mount connector, Contacts: 6 DIN, Shielding is not possible, crimp (Crimp contacts must be ordered separately), IP67, UL
Area	M16 IP67 series 723
Article number	09 0123 700 06

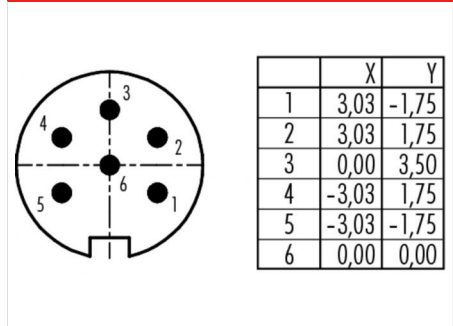
Illustration



Ritning



Polbild



You can find the assembly instruction on the next page.

Technical data

General features

Kontaktdesign	male panel mount connector
Kontaktionslåsning	screw
Anslutning	crimp (Crimp contacts must be ordered separately)
Tvärsnitt (mm)	see crimp contacts under accessories
Övre gränstemperatur	100 °C
Lägre gränstemperatur	- 40 °C
Customs tariff number	85369010

Cable data

Godkännande 1	UL
---------------	----

Electrical parameters

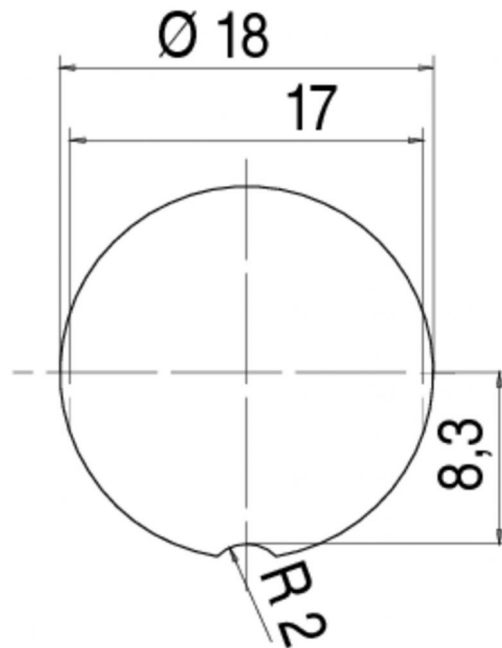
Märkström (40°C)	5 A
Märkspänning	250 V
Märkstötspänning	1500 V
Föroreningsgrad	1
Överspänningskategori	I
Isolermaterialgrupp	III
Resistans	≤ 5 mΩ
Insulation resistance	≥ 10 ¹⁰ Ω
EMV-behörighet	Shielding is not possible
Kapslingsklass	IP67
Mekanisk livslängd	> 500 Mating cycles

Material

Kontaktmaterial	depending on crimp contact (accessory)
Kontaktkroppsmaterial	PBT (UL 94 V-0)
Kontaktusmaterial	Zinc die-cast nickel-plated

Product	M16 IP67 male panel mount connector, Contacts: 6 DIN, Shielding is not possible, crimp (Crimp contacts must be ordered separately), IP67, UL
Area	M16 IP67 series 723
Article number	09 0123 700 06

Installationsinstruktioner / Monteringsutdrag



Product	M16 IP67 male panel mount connector, Contacts: 6 DIN, Shielding is not possible, crimp (Crimp contacts must be ordered separately), IP67, UL
Area	M16 IP67 series 723
Article number	09 0123 700 06

Security notices

The connector must not be connected or separated under load. Non-observance and incorrect use can result in personal injury.

The connectors are designed for use in plant, control system and electrical equipment. The end user is responsible for checking whether the connectors are suitable for use in other applications.

Connectors with degree of protection IP 67 and IP 68 are not suitable for use under water. When used outdoors, the connectors must be separately protected against corrosion. For further information about IP degrees of protection refer to 'Technical support' in the Download Centre.

The connector is not suitable for mains voltages. Please observe the pollution degrees and the overvoltage category. For further information refer to 'Technical support' in the Download Centre.