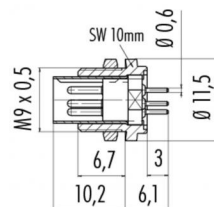


Product **M9 IP40 male panel mount connector, Contacts: 7, Shielding is not possible, dip-solder, IP40**
 Area **M9 IP40 series 711**
 Article number **09 0477 22 07**

Illustration

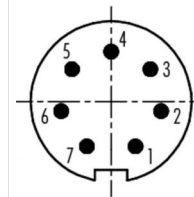


Ritning



max. wall thickness: 1,5 mm

Polbild



	X	Y
1	0,90	-1,65
2	1,85	-0,35
3	1,45	1,20
4	0,00	1,85
5	-1,45	1,20
6	-1,85	-0,35
7	-0,90	-1,65

You can find the assembly instruction on the next page.

Technical data

General features

Kontaktdesign male panel mount connector
 Kontaktdonslåsning screw
 Anslutning dip-solder
 Övre gränstemperatur 85 °C
 Lägre gränstemperatur - 40 °C
 Customs tariff number 85369010

Electrical parameters

Märkström (40°C) 1 A
 Märkspänning 125 V
 Märkstötspänning 1500 V
 Föroreningsgrad 1
 Överspänningskategori II
 Isolermaterialgrupp III
 Resistans ≤ 3 mΩ
 Insulation resistance ≥ 10¹⁰ Ω
 EMV-behörighet Shielding is not possible
 Kapslingsklass IP40
 Mekanisk livslängd > 500 Mating cycles

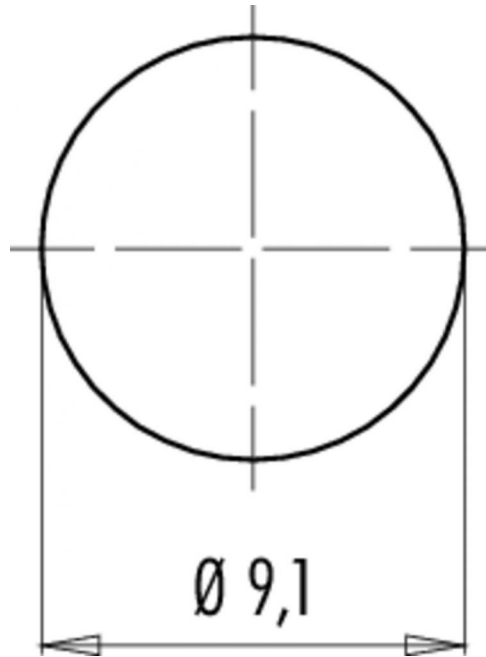
Material

Kontaktmaterial CuZn (brass)
 Kontaktplätering Au (gold)
 Kontaktkroppsmaterial PA (UL 94 V-0)

Product **M9 IP40 male panel mount connector, Contacts: 7, Shielding is not possible, dip-solder, IP40**

Area **M9 IP40 series 711**
Article number **09 0477 22 07**

Installationsinstruktioner / Monteringsutdrag



Product	M9 IP40 male panel mount connector, Contacts: 7, Shielding is not possible, dip-solder, IP40
Area	M9 IP40 series 711
Article number	09 0477 22 07

Security notices

The connector must not be connected or separated under load. Non-observance and incorrect use can result in personal injury.

The connectors are designed for use in plant, control system and electrical equipment. The end user is responsible for checking whether the connectors are suitable for use in other applications.